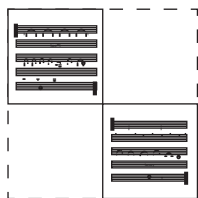
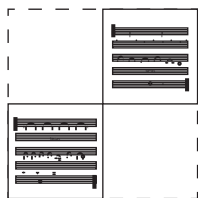


instructions (continued on other card)



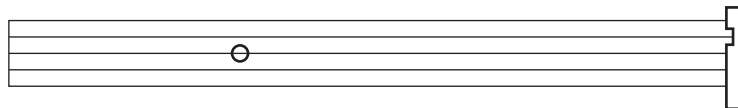
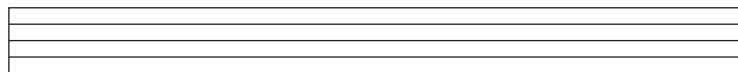
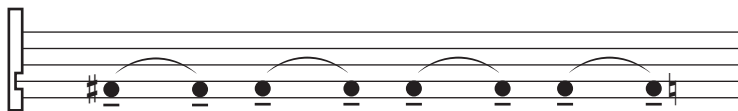
or



only

fold along lines to form a booklet, music facing up.  
place both parts according to diagram above.  
always read respective parts  
in treble clef and in simultaneity.

if your card is placed  
in the upper half, play as written.  
if in the lower half, play one octave lower.  
in lines you cannot transpose lower, do not do it.  
if on the left half, lead.  
if on the right half, follow.



eugene a. kim  
01/2013  
den haag

viola

for carrie f.

guitar

instructions (continued on other card)

choose a pace and keep it.  
do not play too loudly or too softly, always project.  
always listen;  
leader suggests, follower contemplates.

when finishing a line,  
acknowledge one another  
before moving on.

rearrange cards upon finishing all five lines;  
each rearrangement is a new movement,  
so take a brief pause between each.

there are many ways to arrange the cards,  
try to play/rehearse as many as you can find!

for peter k.

